



KLINGER

Mining Solutions

» Chemical

» High Pressure

» High Temperature

» Clean/Cooling Water

» Slurry and Dewatering



GLOBAL LEADER



LOCAL PARTNER

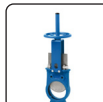
KLINGER Mining Solutions - Select the correct product for the application.

VALVES - OUR RECOMMENDED RANGE



DIAPHRAGM

A diaphragm valve consists of a valve body with two or more ports, an elastomeric diaphragm, and a "weir", "saddle" or seat upon which the diaphragm is compressed to stop the flow.



SLURRY KNIFE GATE

A slurry knife gate valve is a component that utilizes a blade to cut through clogging or heavy slurries.



DUAL PLATE CHECK

Dual plate check valve is a non-return valve that is much stronger, lighter and smaller than the conventional swing check valve.



BUTTERFLY VALVE

Butterfly valves are used where space is limited. The pressure loss through a butterfly valve is small in comparison with the gate valve.



PLUG VALVE

Plug valves are valves with cylindrical or conically tapered "plugs" which can be rotated to control flow through the valve.



GGC - STANDARD GATE, GLOBE AND CHECK

KLINGER stock a wide variety of standard gate, globe and check valves.



LEVEL EQUIPMENT - GLASSES

KLINGER manufactures a wide variety of level equipment including sight glasses, level gauges, magnetic level gauges and many more. These are manufactured to customer specification.



CONTROL COMPONENTS - ACT & PROXY

KLINGER stock a wide range of control components including actuators, pneumatic semi-smart and smart positioners, solenoid valves and magnetic, micro and proximity switch boxes.



SAFETY EQUIPMENT

Safety devices are a critical aspect to any fluid control system, used to prevent damage to industrial plant and equipment. KLINGER supply a full range of pressure safety valves and bursting discs.



AUTOMOTIVE



KLINGER STATITE - A low cost, bitumen impregnated sealing material, used extensively in the automotive and mechanical power transmission industries.



FABRIC CONCERTINA BELLOWS - Offer protection from contaminate ingress thereby preventing rod scoring and extending the seal life of the hydraulic cylinder.



KLINGERSIL C8200 - An economical sealing material designed for aggressive chemical environments. Resistant to acids, alkalis, ketones, aldehydes and refrigerants.



KLINGER TOPCHEM 2003 - A chemically resistant sealing material for strong acid and alkali applications with medium to low mechanical requirements at medium to low temperatures. For worn or damaged flanges.



KLINGER TOPCHEM 2005 - A chemically resistant sealing material for strong acid applications with high mechanical and temperature requirements. For use in the chemical processing of mineral ore and the demineralising of boiler feed water.



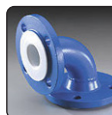
KLINGER HYGRADE LS
A soft flexible sealing material with high compressibility. Resistant to most chemicals. Ideal for use with glass-lined and enamel flanges.



SEALEX® JOINT SEALANT
Specially processed, 100% pure PTFE on a roll, provides soft, highly compressible gasketing for longer life and trouble free sealing.



PTFE BELLOWS
Our PTFE bellow range is used to compensate for thermal expansion in pipelines, for the protection of fragile process equipment such as carbon, plastic or glass in highly corrosive environments.



PTFE LINED PIPE
Combines the chemical resistance of PTFE with the pressure carrying capabilities of mild steel or stainless steel pipes. Liners provide for the safe handling of corrosive fluids.



PLASTIC MACHINED COMPONENTS
Appear in bushings, wear pads, seals, rollers, connectors, soot blower kits, envelopes, valve seats and more.



SAFETY SPRAY SHIELDS
Fabric spray shields are designed to prevent injuries and damage to equipment by containing sprays resulting from leaks.



G-FLEX REPAIR COUPLINGS
A high pressure stainless steel repair coupling used on most common pipe materials.



KLINGER STYLE K20 - KLINGER Style K20 has the ability to handle a wide range of chemicals as well as light slurry applications. Style K20 is manufactured from glass and acrylic yarns and lubricated with our proprietary Doulon® lubricant, providing excellent heat transfer and lubricating properties for extended life and low shaft wear.



KLINGER STYLE K4313 - A unique cross braided packing that is made from a combination of PTFE, with a graphite inclusion and aramid multi-filament on the corners. The strong aramid corner posts resist extrusion from the stuffing box while ensuring that unwanted solids are excluded.



KLINGER STYLE K25 - Aramid yarn packing impregnated with a PTFE dispersion. It is recommended for use in media containing suspended solid abrasive particles. For use in pumps, mixers, valves and knife gate valves. Ideal for heavy duty slurry applications in the mining industry.

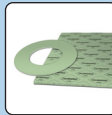


KLINGER STYLE K7302DL - Various high strength modified aramid yarns result in a packing with high lubrication retention ability resulting in low shaft or sleeve wear. Ideal for use in high pressure and high speed pumping applications. KLINGER Style K7302DL is the market leading slurry packing. Also available with a PTFE lubricant Style K7302. **Exclusive to KLINGER.**



RUBBER INSERTIONS

Fabric reinforced general purpose rubber, not suitable for use in fuels, oils and other hydrocarbons.



KLINGERSIL C4243

An economical sealing material for use in general industrial applications.



KLINGERSIL C4430

A sealing material with high temperature resistance in steam, oils, fuels, hydrocarbons and other chemicals. Suitable for potable water.



KLINGER MAXIFLEX GASKETS

A gasket with excellent high pressure, temperature and chemical resistance, used in critical service. Very tolerant of cyclic applications and misaligned flanges.



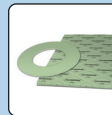
KLINGER STYLE K49 - A high quality, cross braided PTFE yarn with graphite inclusion that gives the packing several distinct advantages; high speed, low shaft and sleeve wear, no graphite migration and no contamination of the process media.



KLINGER STYLE K54 - An excellent PTFE packing for plant wide use especially when a clean, non-contaminating packing is required with a very high degree of chemical resistance. Can be used in virtually all media including strong acids and alkalis. Suitable for use in oxygen service up to 20 Bar pressure in valves. The ideal packing for use as tanker lid seals.



KLINGER MAXIFLEX GASKETS
A gasket with excellent high pressure, temperature and chemical resistance, used in critical service. Very tolerant of cyclic applications and misaligned flanges.



KLINGERSIL C4243

An economical sealing material for use in general industrial applications.



DISMANTLING JOINTS AND RESTRAINED ADAPTORS

A fully restrained joint that allows axial adjustment in flanged assemblies.



POLYGRIP RANGE

Restrained couplings, flange adaptors, end caps and harnesses for HDPE and PVC pipes.



UNIFIT SERIES

Universal coupling and flange adaptors to suit most common pipe materials.



G-FLEX REPAIR COUPLINGS

A high pressure stainless steel repair coupling used on most common pipe materials.



ULTRA CLAMPS

A permanent stainless steel pipe repair clamp.



KLINGER STYLE K2168 - A low cost general purpose gland packing manufactured from high quality natural yarns and lubricated with graphite wax. KLINGER Style K2168 is suitable for less demanding applications.



KLINGER STYLE K4307 - Superior flax yarns that are cross braided and impregnated with PTFE and additional sea water resistant lubricants. As flax yarns are particularly strong and have higher rot resistance, this packing is suitable for centrifugal pumps, valves and shaft seals that are in contact with fresh water or sea water.



KLINGER STYLE K49 - A high quality, cross braided PTFE yarn with graphite inclusion that gives the packing several distinct advantages; high speed, low shaft and sleeve wear, no graphite migration and no contamination of the process media.



BUFFALO SADDLES

Universal tap in saddles for rigid pipe materials.



EASI TEE
Large diameter, bolt on, tap in tee pieces.



UNIFIT SERIES

Universal coupling and flange adaptors to suit most common pipe materials.



G-FLEX INSTALL COUPLINGS

Fully rubber lined stainless steel flexible coupling.



ULTRA CLAMPS
Permanent stainless steel pipe repair clamps.



POLYGRIP RANGE

Restrained couplings, flange adaptors, end caps and harnesses for HDPE and PVC pipes.



DISMANTLING JOINTS AND RESTRAINED ADAPTORS

A fully restrained joint that allows axial adjustment in flanged assemblies.



G-FLEX REPAIR COUPLINGS

A high pressure stainless steel repair coupling used on most common pipe materials.



KLINGER PSM - A sealing material with excellent chemical and thermal capabilities. Used in mining, steam and various chemical processes.



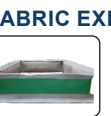
SIGRAFLEX HOCHDRUCK - A high integrity, multi-laminate, sealing material with excellent thermal and chemical resistance. Manufactured from multiple layers of 316 stainless steel and high purity graphite.



KLINGER MAXIFLEX GASKETS
A gasket with excellent high pressure, temperature and chemical resistance, used in critical service. Very tolerant of cyclic applications and misaligned flanges.



KLINGER STYLE 7301 - A dry general purpose packing for doors, cover seals on boilers, ovens, furnaces, rotary kiln seals, brickwork bumper seals and electrode seals in arc furnaces. Available in round, square or rectangular cross section, from 3mm up to 200mm.



FABRIC EXPANSION JOINTS

Fabric expansion joints are flexible connectors designed to provide stress relief and seal in gaseous media in ducting systems.



STAINLESS STEELS

Metal expansion joints consist of a flexible bellow element with end fittings such as flanges or butt welds to allow for connection to the adjacent piping or equipment.



INSULATION JACKETS

Are used in a variety of applications where energy saving and temperature maintenance control is required.



STAINLESS STEEL SPRAY SHIELDS

Stainless steel spray shields are designed, for high pressure systems, to prevent injuries and damage to equipment by containing sprays resulting from leaks.



STAINLESS STEEL BELLOWS

Metal expansion joints consist of a flexible bellow element with end fittings such as flanges or butt welds to allow for connection to the adjacent piping or equipment.



KLINGER STYLE K3222 - A cross braided expanded graphite packing. KLINGER Style K3222 forms a solid graphite bush within the stuffing box creating a high pressure low emission seal. Ideal for use in steam and cryogenic applications. K3222 is available as K3222W and K3222K with wire reinforcing for use in high pressure valves.



KLINGER STYLE K466M

A universal packing for centrifugal pumps, boiler feed water pumps and valves in high pressure and temperature applications. Wear resistant and gentle on pump shafts, sleeves and valve stems. The excellent heat transfer capabilities of carbon along with the lubricant used to manufacture KLINGER Style K466M makes this packing ideal for steam plants.



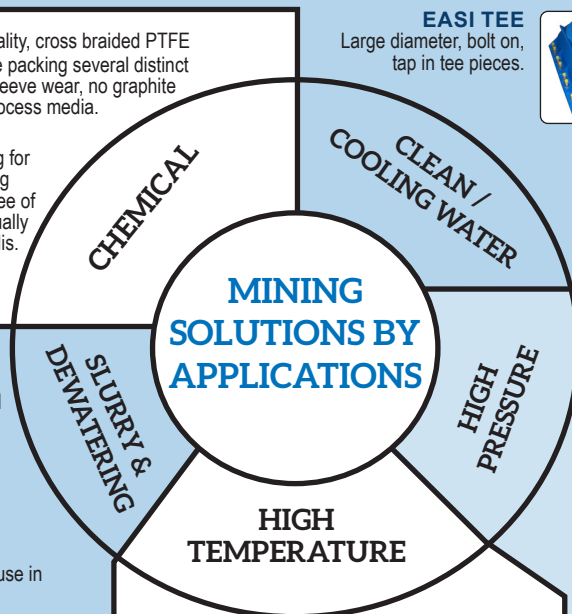
UNIFIT SERIES

Universal coupling and flange adaptors to suit most common pipe materials.



DISMANTLING JOINTS AND RESTRAINED ADAPTORS

A fully restrained joint that allows setting flexibility in flanged assemblies.





KLINGER

Mining Solutions



KLINGER is the world's leading manufacturer and supplier of industrial gaskets, mechanical gland packing, fluid control products, pipe products, expansion joints, engineering plastics and field services. Established in 1886 as a family enterprise, the group of KLINGER independent companies now has a worldwide presence in over 60 countries, providing a range of products and services to customers in the manufacturing, infrastructure, marine, oil & gas, chemical, pulp & paper, energy, food & beverage, agriculture, mining and pharmaceutical industries. In addition, KLINGER provides professional technical support and advanced training solutions. Our professional services include bolt load and torque calculations, failure analysis, joint integrity management, on-site machining, valve reconditioning, on-line leak sealing, and shutdown support.

The mining industry utilises a cluster of processes that are involved with the extraction, concentration, and processing of naturally occurring solid minerals and ores from the earth's crust. KLINGER has the products, technical expertise, footprint and stock holding to service the mining industry as a global leader and local partner.

For technical information, contact our technical team on technical@klinger.co.za.
or contact one of our KLINGER branches nearest to you.

WADEVILLE

247 Davidson Road, Wadeville,
Gauteng

T: +27 (0) 11 842 8300

E: sales@klinger.co.za

SASOLBURG

30 William Stow Street,
Sasolburg, Free State

T: +27 (0) 16 976 2952

E: vaalsales@klinger.co.za

MIDDELBURG

Unit 5 Nucleus Square, 7 Spring
Street, Middelburg, Mpumalanga

T: +27 (0) 10 200 9814

E: salesmburg@klinger.co.za

RICHARDS BAY

67B Dollar Drive, Richards Bay,
KwaZulu Natal

T: +27 (0) 35 789 0595

E: salesrb@klinger.co.za

GQEBERHA

134 Paterson Road, North End,
Gqeberha, Eastern Cape

T: +27 (0) 41 484 1424

E: salespe@klinger.co.za

CAPE TOWN

51 Columbus Crescent,
Rivergate Business Park, Cape
Town, Western Cape

T: +27 (0) 21 511 1337

E: cape@klinger.co.za

HONEYDEW

Cnr Johan Road & Brigatyn
Avenue, Laser Park Ext 17,
Honeydew, Gauteng

T: +27 (0) 11 794 7594

E: kpp.sales@klinger.co.za

SECUNDA

8 Schalk Burger Street,
Secunda, Mpumalanga

T: +27 (0) 17 638 0212

E: secundasales@klinger.co.za

MBOMBELA

25 Amanzi Street, Unit 25
Riverside Industrial Park,
Mbombela, Mpumalanga

T: +27 (0) 13 010 0092

E: nelspruitsales@klinger.co.za

DURBAN

340 Chris Hani Road, Briardene,
Durban, KwaZulu Natal

T: +27 (0) 31 579 1041

E: salesdbn@klinger.co.za

MOSSEL BAY

17 Bolton Road, Voorbaai,
Mossel Bay, Western Cape

T: +27 (0) 10 010 0797

E: salesmb@klinger.co.za

ZAMBIA

Plot No.5408 Mutentemuko
Road, Heavy Industrial Area,
Kitwe, Zambia

T: +26 (0) 979 154 892

E: zambiasales@klinger.co.za



All information is based on years of experience in production and operation of sealing elements. However, in view of the wide variety of possible installation and operating conditions one cannot draw final conclusions in all application cases regarding the behaviour in gasket joint. The data may not, therefore, be used to support any warranty claims. This edition cancels all previous issues. Subject to change without notice.

Certified acc. to DIN EN ISO 9001:2015 Subject to technical alterations.
KLINGER Industrial Products India Pvt. Ltd. #6 Tarana, 1st Floor, GoodEarth Malhar, Kambipura, Kengeri, Bengaluru
560074, Karnataka, India. Tel +91 8618523021 / +91 80 2990 9572 / e-mail: info@klinger.in

www.klinger.in

